

Training in Urban Medicine & Public Health (TRIUMPH)

Aurora Foundation Housing Information Sheet Aurora Health Care®

Aurora Health Care has been in partnership with the University of Wisconsin School of Medicine and Public Health for more than 35 years, providing high quality medical education in Milwaukee's culturally diverse urban environment. Aurora also provides housing near the hospitals and with easy access to the vibrant social and cultural scene in Milwaukee.

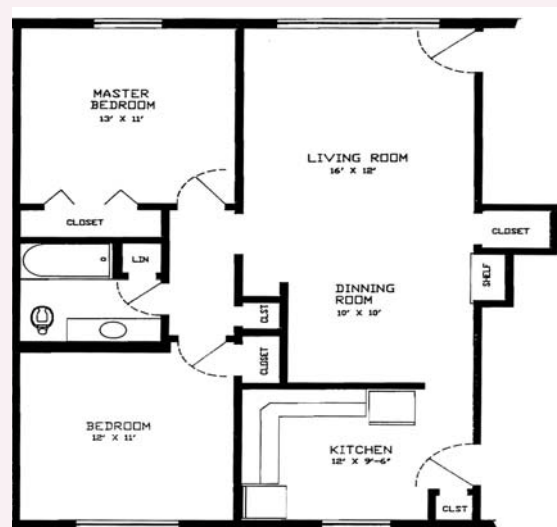
Milwaukee Housing Accommodations



Two-Bedroom fully furnished apartments located approximately 2 miles from Aurora St. Luke's and approximately 7 miles from Aurora Sinai Medical Center. All units have local phone, internet, heat & air conditioning, assigned off-street parking and free laundry facilities and storage area located in the building basement. There's also a shared garden area that is maintained by your fellow students and medical residents who reside on the property for a "community feeling." The apartments are located in Milwaukee's southside neighborhood of White Manor/Jackson Park right off of 56th and Oklahoma Avenue. Sorry, no pets are allowed.

What's in the Area

- ☞ Walgreens Pharmacy
- ☞ Super markets
- ☞ Jackson Park/KK River Parkway
- ☞ Close Freeway access
- ☞ Miller Park



Student Apartment Layout



The Facts: What you need to know

M3's

All M3's will be sharing an apartment with another student with no rental fee. If you are married or have a significant other and wish to have them reside with you during your stay, you will be responsible to pay 50% of the rental fee.

M4's

All M4's will have their own two-bedroom apartment. Aurora will cover rent and utilities during your fourth year.

Special Needs

If you have a situation that may require alternative housing, please contact Doreen Vallier of the Aurora Foundation Property Management at 414-649-7388 to discuss your particular situation. Alternatives will be evaluated on a case by case basis and are subject to availability and other mutually agreed upon arrangements.

What other students are saying about Aurora Housing

"Some of the things that I've appreciated most about the housing through Aurora is how spacious it is. Additionally, Doreen has always been extremely attentive and fast to address any problem that might come up. The garden boxes out front are a definite bonus!"

- Anne Getzin

"Positive: Off street parking, better furnished than Library Hill, close to Jackson Park and Kinnikinic River Parkway for running/biking, free laundry facilities. Flower-beds for gardening. Close to Miller Park. A short drive or easy bike-ride to St. Luke's. Somewhat close to Bayview neighborhood for restaurants and bars. Close to many grocery stores and retail stores. Easy to get to from highway to Madison. Short drive to airport"

- Ryan Baxter

"We are very happy with our housing. It has hardwood floors in the living room, is a 3 bedroom, and is extremely close to St Luke's. We are just around the corner from Leon's iconic frozen custard stand, and even though we can walk to Walmart and St Luke's within 3 minutes, it is a very quiet street. That being said, this is not the traditional housing for TRI-UMPH students--they found us this place because of the whole baby thing."

- Tony Sturm

Aurora Contacts

Doreen Vallier
Property Management
Aurora Foundation
414-649-7388

doreen.vallier@aurora.org

Kathy Musack
Medical Education
Aurora Sinai Medical Center
414-219-7937

kathy.musack@aurora.org

Ann Tylanda
Director, Graduate Medical Education
Aurora Health Care
414-649-6558
ann.tylenda@aurora.org